



Kave
Decco

One world . One green wood



About Us

Conceived and built in the UAE, KaveDecco is founded on the belief that wood is not just a material, but a living, renewable legacy.

We innovate with purpose—protecting forests, enabling circular production, and crafting durable, customizable, and aesthetically refined wood solutions.

From forests to factories to finished spaces, ethics and aesthetics guide everything we create.

Locally rooted and globally connected, KaveDecco delivers sustainable, high-performance panels and components that add lasting value while balancing environmental, social, and economic impact.

Why choose KaveDecco Green Panels



Forerunners in Finger-jointed & Edge-glued solutions - First movers, Fast movers



**UAE standards of excellence
Global supply reach**



Custom aesthetic & design freedom



Champions of sustainable economy



Built to last, designed to return value



Experts in solid engineered wood

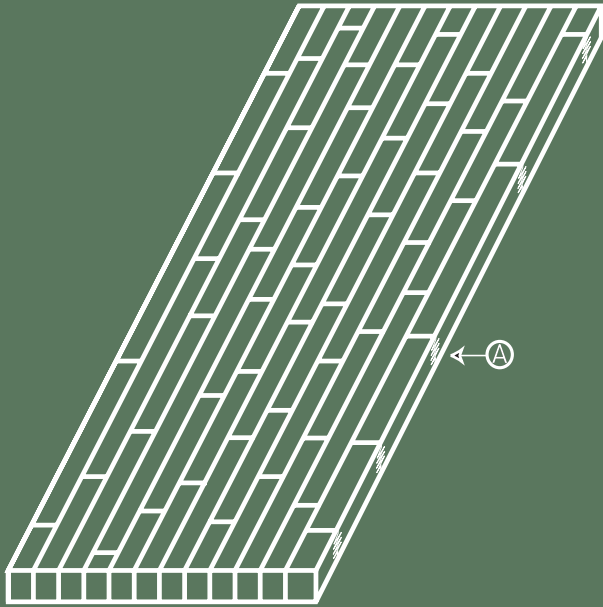


Our mission is to innovate with purpose: protecting forests, empowering circular production, and creating durable, customizable, and aesthetic wood solutions.

Using engineered and finger-jointed wood supports a true circular economy by maximising every centimetre of timber, extending product life, and reducing the need for fresh logging.



Technical Qualities & Sizes Available



Thickness:
MIN 6MM – MAX 200MM

Width:
MIN 150 MM – MAX 1220MM

Length:
MIN 1000 MM – MAX 3000 MM

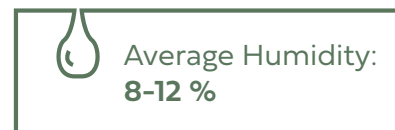
Grades Available :

Grade A:
Sorted for colour; clear, defect-free faces on both sides.

Grade B:
Not colour-sorted; clear, defect-free faces on both sides.

Grade AB:
Not colour-sorted; one side clear, the other with minor natural characteristics.

Grade BC:
Not colour-sorted; knots and natural characteristics visible on both sides.



Southern Yellow Pine

Dense, Strong & Durable

High density, outstanding screw holding.



Industries & Applications

Flooring

- Solid flooring core material
- Wear layers for engineered flooring

Furniture

- Rustic furniture
- Tabletops requiring strength

Construction

- Stair parts
- Heavy-duty frames
- Door rails & stiles

Outdoor

- Pergola components (when treated)

Engineering Properties

Density (kg/m ³)	MOE (N/nm ²)	Hardness (N/nm ²)	Bending Strength (N/nm ²)	Shear Strength (N/nm ²)
590-620	11000-13000	69	90-110	12-14

Processing Features

Cutting	Planing	Drilling	Painting	Screwing	Carving	Veneer Pasting
Good	Moderate	Good	Good	Excellent	Good	Good

Red Oak

Premium North American Hardwood

Beautiful grain, excellent machining, widely accepted in luxury interiors.



Industries & Applications

Interior Fit-Out

- Wooden doors & jambs
- High-end wall panelling
- Staircases
- Wooden flooring components

Luxury Furniture

- Dining & office tables
- Cabinets & wardrobes
- Drawer fronts & side panels

Retail/Hospitality

- Reception counters
- Decorative partition systems

Engineering Properties

Density (kg/m ³)	MOE (N/nm ²)	Hardness (N/nm ²)	Bending Strength (N/nm ²)	Shear Strength (N/nm ²)
700-760	12000-13000	59	100-120	12-14

Processing Features

Cutting	Planing	Drilling	Painting	Screwing	Carving	Veneer Pasting
Good	Good	Excellent	Moderate	Excellent	Excellent	Good

Meranti

Lightweight Hardwood for Interiors

Stable, economical, excellent painting surface.



Industries & Applications

Joinery

- Doors (solid core & stile/rail)
- Interior partitions
- Mouldings

Furniture

- Carcass furniture
- Panel furniture
- Veneered cabinet doors

Construction

- Plywood substitutes
- Ceiling panels
- Interior frames

Engineering Properties

Density (kg/m ³)	MOE (N/nm ²)	Hardness (N/nm ²)	Bending Strength (N/nm ²)	Shear Strength (N/nm ²)
450-600	8500-11000	25-40	60-85	8-10

Processing Features

Cutting	Planing	Drilling	Painting	Screwing	Carving	Veneer Pasting
Good	Good	Good	Good	Good	Moderate	Excellent

Beech

Industrial & High-Precision Use

Extremely hard, uniform grain, perfect for precision machining.



Industries & Applications

Furniture

- Bentwood furniture
- Chairs, legs, table frames
- Kitchen cabinetry

Interior Fit-Out

- Stair treads
- Door frames
- Handrails

Tooling & Industrial

- Workbenches
- CNC fixtures
- Industrial jigs

Engineering Properties

Density (kg/m ³)	MOE (N/nm ²)	Hardness (N/nm ²)	Bending Strength (N/nm ²)	Shear Strength (N/nm ²)
710-750	13000-14000	60-65	110-130	12-14

Processing Features

Cutting	Planing	Drilling	Painting	Screwing	Carving	Veneer Pasting
Excellent	Excellent	Excellent	Excellent	Excellent	Excellent	Excellent

African Teak

Outdoor & Premium Durability.

Naturally durable, weather resistant, teak-like performance.



Industries & Applications

Outdoor

- Exterior door frames
- Pergolas
- Outdoor benches
- Marine applications

Premium Furniture

- Luxury tabletops
- High-end cabinetry
- Hotel & resident premium décor

Construction

- Heavy-duty steps
- Exterior façade battens

Engineering Properties

Density (kg/m ³)	MOE (N/nm ²)	Hardness (N/nm ²)	Bending Strength (N/nm ²)	Shear Strength (N/nm ²)
630-660	10500-12000	55	80-100	10-12

Processing Features

Cutting	Planing	Drilling	Painting	Screwing	Carving	Veneer Pasting
Moderate	Moderate - Difficult	Good	Moderate	Excellent	Moderate	Moderate

Hemlock

Stable & Workable

Clean grain, easy machining, excellent for interiors.



Industries & Applications

Interior Fit-Out

- Doors, panels, stair elements, mouldings and trims

Furniture Manufacturing

- Wardrobes, cabinets, shelving, storage & lightweight components

Retail, Hospitality & Commercial

- Shopfitting, display counters, interior panelling & joinery systems

Construction Applications

- Non-structural framing, joinery profiles & acoustic/laminated substrates

Special Applications

- Musical instruments, decorative beams, lamination & veneering features

Engineering Properties

Density (kg/m ³)	MOE (N/nm ²)	Hardness (N/nm ²)	Bending Strength (N/nm ²)	Shear Strength (N/nm ²)
480-520	10300-11000	26	70-90	9-11

Processing Features

Cutting	Planing	Drilling	Painting	Screwing	Carving	Veneer Pasting
Good	Good	Good	Good	Good	Good	Good

Yellow Cedar

Premium Softwood

Naturally insect-resistant, stable, aromatic, very consistent grain.

Industries & Applications

Interior & Joinery

- High-end interior wall cladding
- Sauna & steam-room panels (naturally rot resistant)
- Window & door components
- Interior mouldings & trims

Furniture

- Lightweight furniture frames
- Cabinet carcasses
- Decorative laminated boards

Construction

- Acoustic panels
- Ceiling battens
- Light structural components

Specialty/Outdoor

- Boat interiors
- Exterior soffits (excellent durability)

Engineering Properties

Density (kg/m ³)	MOE (N/nm ²)	Hardness (N/nm ²)	Bending Strength (N/nm ²)	Shear Strength (N/nm ²)
480-530	9500-10500	15.6	55-70	8-10

Processing Features

Cutting	Planing	Drilling	Painting	Screwing	Carving	Veneer Pasting
Excellent	Excellent	Excellent	Excellent	Good	Excellent	Excellent

White Oak

Ultra Premium Hardwood

Strong, rot-resistant, tight grain, premium aesthetics.

Industries & Applications

Luxury Interior Fit-Out

- Villa interiors
- Hotel rooms
- Yachts & marine interiors

High-End Furniture

- Premium tables
- Chairs and structural components
- Panels for custom furniture

Doors & Windows

- Solid wood doors
- Exterior-rated door frames
- Window sashes

Flooring

- Wear layers and T&G flooring cores

Engineering Properties

Density (kg/m ³)	MOE (N/nm ²)	Hardness (N/nm ²)	Bending Strength (N/nm ²)	Shear Strength (N/nm ²)
740-770	11500-12500	60	90-110	11-13

Processing Features

Cutting	Planing	Drilling	Painting	Screwing	Carving	Veneer Pasting
Good	Good - Excellent	Excellent	Good	Excellent	Excellent	Good

Douglas Fir

Strong & Structural

High MOE, excellent strength-to-weight ratio, beautiful grain.

Industries & Applications

Interior & Joinery

- Windows & high-strength door frames
- Feature walls
- Exposed beams in villas

Furniture

- Heavy-duty tables, desks, worktops
- Cabinet frames requiring stiffness

Construction & Structural

- Glulam beams
- CLT-style door cores
- Stair treads and risers
- Structural lintels

Engineering Properties

Density (kg/m ³)	MOE (N/nm ²)	Hardness (N/nm ²)	Bending Strength (N/nm ²)	Shear Strength (N/nm ²)
480-550	12000-13500	27-28	70-100	10-12

Processing Features

Cutting	Planing	Drilling	Painting	Screwing	Carving	Veneer Pasting
Good - Excellent	Good	Excellent	Good	Excellent	Good	Good

Radiata Pine

Light, Clean & Economical

Highly machinable, clean grain, perfect for mass manufacturing.

Industries & Applications

Interior Fit-out

- Wall & ceiling panels
- Door cores
- Interior trims and mouldings

Furniture

- Modular furniture
- Shelving & wardrobes
- Kitchen carcasses

Packaging & Retail

- Retail display racks
- Exhibition stands
- Lightweight packing crates

Engineering Properties

Density (kg/m ³)	MOE (N/nm ²)	Hardness (N/nm ²)	Bending Strength (N/nm ²)	Shear Strength (N/nm ²)
470-500	8500-9500	30	60-80	7-8

Processing Features

Cutting	Planing	Drilling	Painting	Screwing	Carving	Veneer Pasting
Excellent	Excellent	Excellent	Excellent	Good	Excellent	Excellent

Beech Surface Finishes



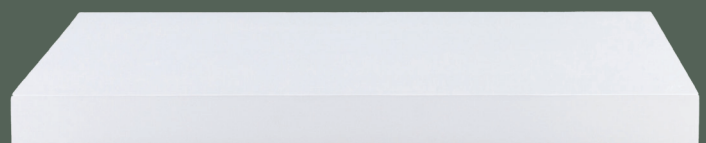
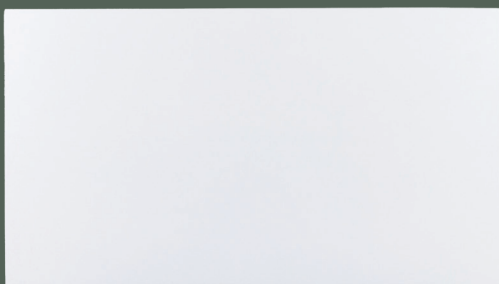
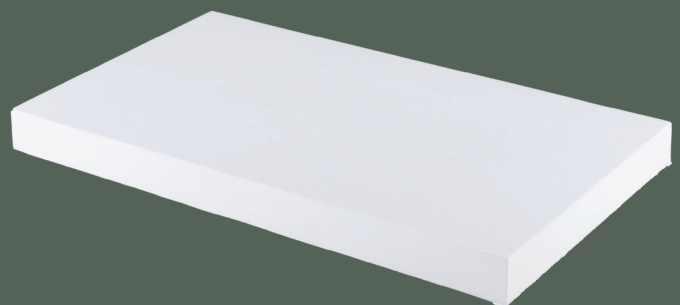
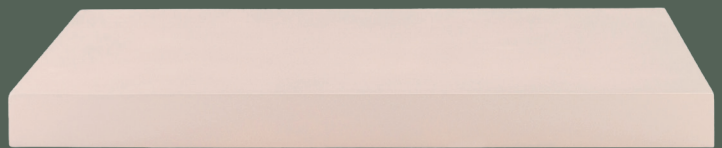
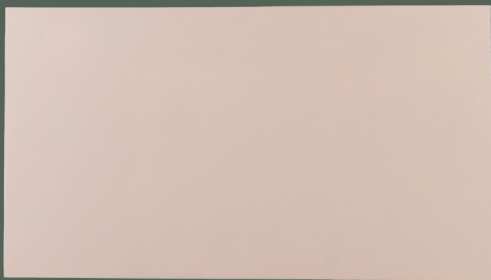
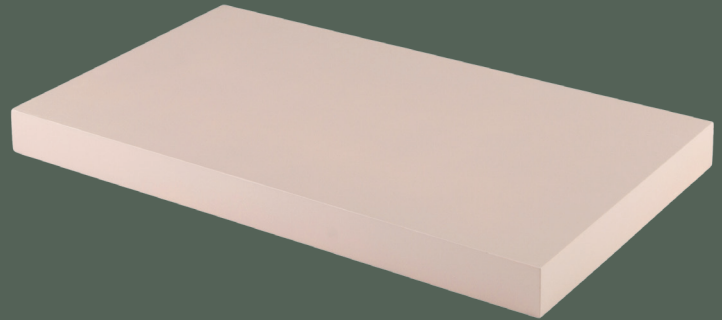
Shown here are select finishes. Additional finishes available on request.

Beech Surface Finishes



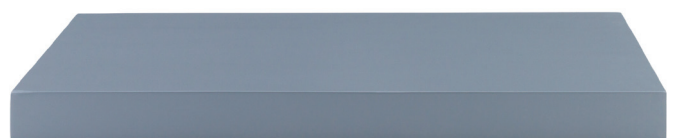
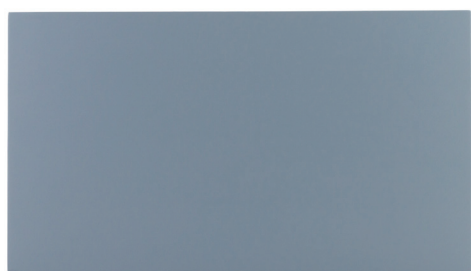
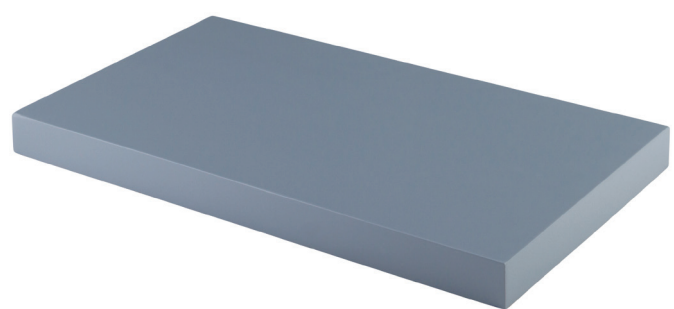
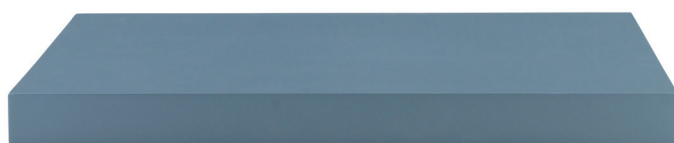
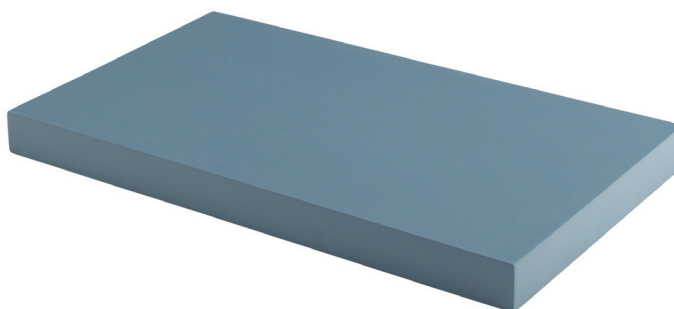
Shown here are select finishes. Additional finishes available on request.

Red Oak Surface Finishes



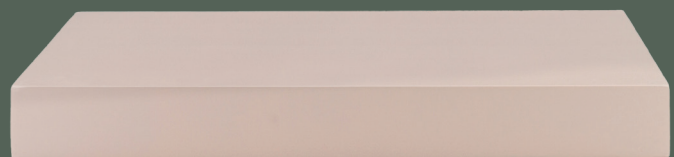
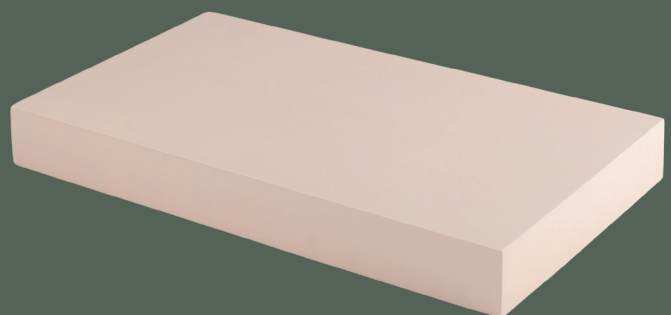
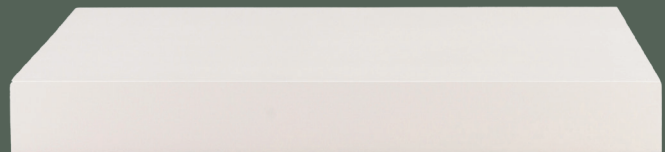
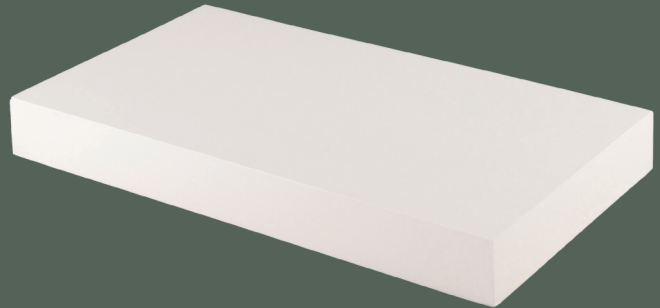
Shown here are select finishes. Additional finishes available on request.

Red Oak Surface Finishes



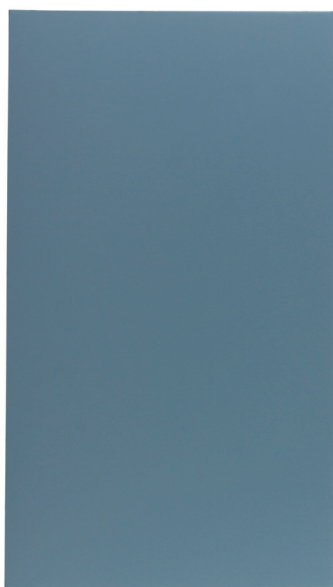
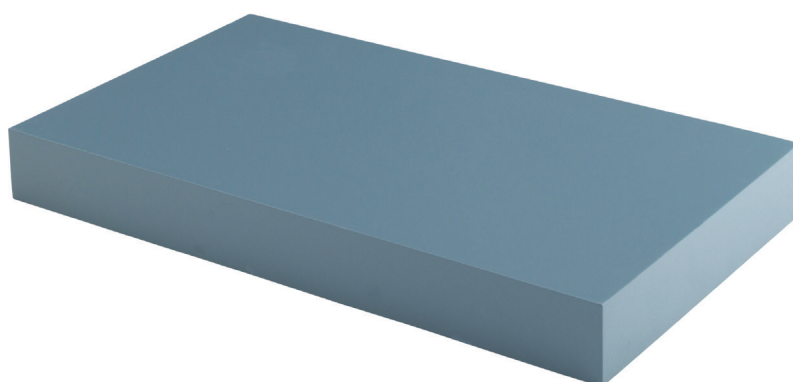
Shown here are select finishes. Additional finishes available on request.

Southern Yellow Pine Surface Finishes



Shown here are select finishes. Additional finishes available on request.

Southern Yellow Pine Surface Finishes



Shown here are select finishes. Additional finishes available on request.

LET'S BUILD SMARTER, TOGETHER

Partner with KaveDecco for sustainable,
high-performance wood solutions across
the UAE and GCC.

sales@kavedecco.ae

info@kavedecco.ae

+971 58 888 8726 | +971 52 457 2110

www.kavedecco.ae

2107, Office Number 17, Iris Bay Tower,
Business Bay,
Dubai

